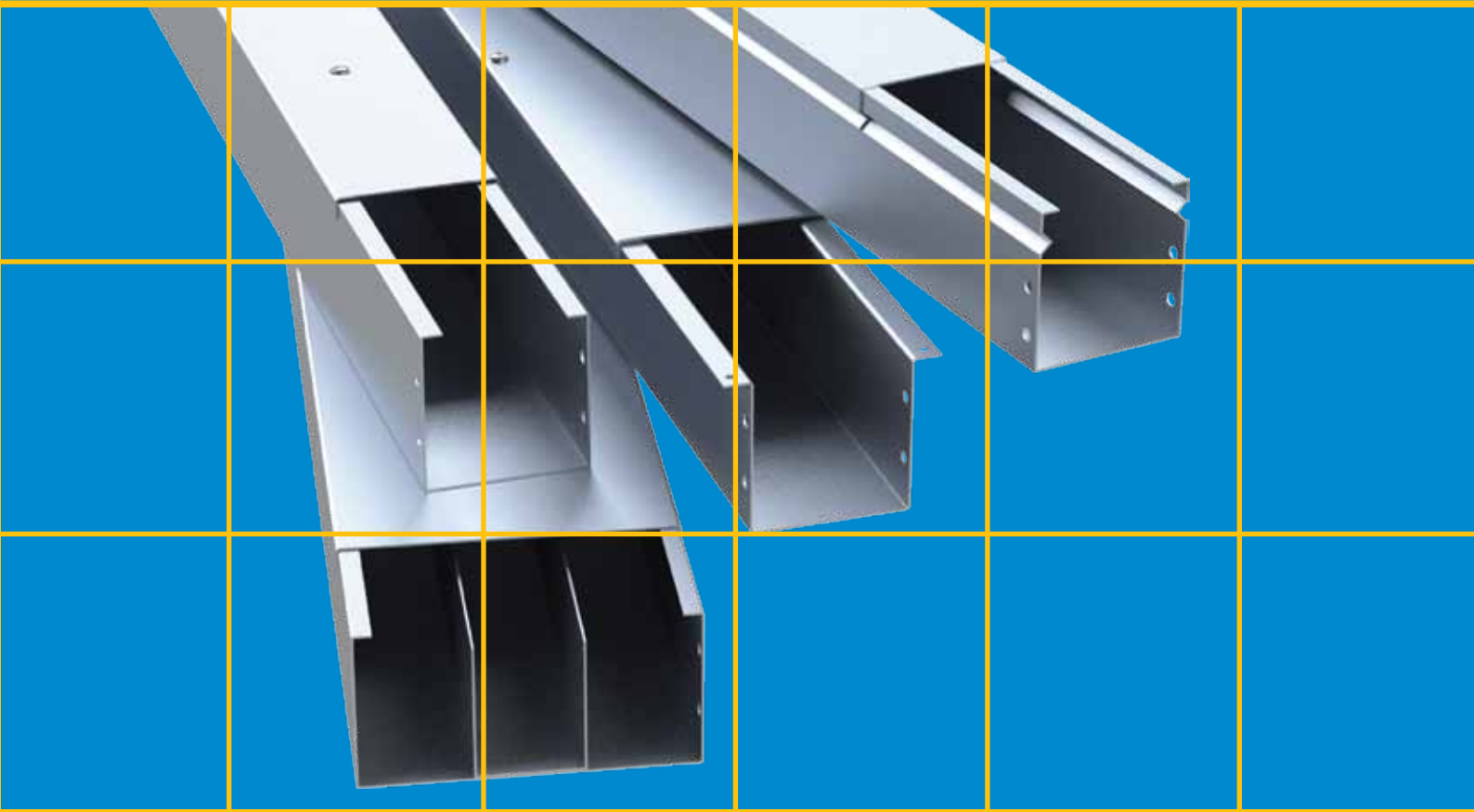


# Power Solution Industries

DESIGN, ENGINEERING & MANUFACTURING COMPANY



PRODUCT CATALOGUE



BSI  
KITEMARK



CERTIFIED

CABLE TRUNKING SYSTEMS

# CONTENTS

CABLE TRUNKINGS	4
BEND TOP COVER	6
BEND INSIDE COVER	7
BEND OUTSIDE COVER	8
TEE TOP COVER	9
CROSS TOP COVER	12
REDUCERS	13
OFFSET TRUNKING	15
CABLE TRUNKING ACCESSORIES	16
TECHNICAL DATA	19

EDITION 2022



*Engineered to Excellence*



BSI  
KITEMARK

**BSI KITEMARK CERTIFIED PRODUCTS**

**1ST CABLE MANAGEMENT MANUFACTURING COMPANY IN  
MIDDLE EAST AND AFRICA**

Power Solution Industries quality plan conforms comprehensively to ISO 9001:2015, ISO 45001: 2018, ISO14001: 2015. The quality assessment and reviews are carried out by DET NORSE VERITAS. The organization defines its quality objectives at the various levels of the company in order to achieve continual improvement in quality management system.

# SURFACE CABLE TRUNKINGS

## INTRODUCTION

PSI Cable Trunkings are manufactured in compliance with BS EN 50085 - 1: 2005 & BS EN 50085 - 2-1 - 2006. PSI Cable Trunkings are manufactured to the standard length of 3 mts but can be produced to any desired length on request.

PSI Cable Trunkings are manufactured with Jet lock, Screw fixing and Snap on cover arrangements. The Jet lock cover requires only a quarter rotation of the turn buckle for fixing on the trunking body. The Snap on Trunking is a push type cover arrangement designed to fit tight on the trunking body. PSI Cable Trunking straight lengths are connected by different type of connectors to ensure the continuity of the raceway.

PSI Cable Trunking Fittings are produced in single pieces and require no welding. The Fittings are produced with integral connectors and require no separate connectors for the connection.

## STANDARD FINISHES

FINISH	DESCRIPTION
HDG	Hot dip Galvanized to BS EN ISO 1461 : 2009 or ASTM 123
PG	Pre-galvanized to BS EN 10346 : 2015
PC	Powder Coating to suit clients requirements
EP	Epoxy Painting to suit clients requirements
SS	Stainless steel finish to BS EN 10088 - 2 : 2014
AL	Aluminium finish to required grades
AZ	Aluzinc finish

## ORDER PATTERN

TYPE	DESCRIPTION
JL	Jet lock Cover Arrangement
SF	Screw fixing Cover Arrangement
SN	Snap on Cover Arrangement
WP	IP Rated Weather proof Trunking

### Reference

Single Chamber Jet lock trunking 100 mm wide & 100 mm side height **JL / C/T / 4x4 / T / F**

Double Chamber Snap on trunking 150 mm, wide 150 mm side height **SN / 2C/T / 6x6 / T / F**

### Note

- ★ Use 'JL' as prefix for ordering Jet lock Trunkings, 'SF' as prefix for ordering Screw fixing Trunkings & 'SN' as prefix for ordering Snap on Trunkings.
- ★ The Trunkings are manufactured in Single & Multi-Compartments also and prefix '2C' or '3C' is required for ordering two or three compartments.
- ★ Specify 'F' as per your desired finish.

★ **Custom designed Cable Trunking Systems can be manufactured on request.**

# SURFACE CABLE TRUNKINGS

## STRAIGHT LENGTHS

WIDTH mm	HEIGHT mm	THICKNESS ( T ) mm	SINGLE COMPARTMENT	TWO COMPARTMENT	THREE COMPARTMENT
50	50	0.8 - 2.0	TYPE / C/T / 2x2 / T / F	TYPE / 2C/T / 2x2 / T / F	TYPE / 3C/T / 2x2 / T / F
75	50	0.8 - 2.0	TYPE / C/T / 3x2 / T / F	TYPE / 2C/T / 3x2 / T / F	TYPE / 3C/T / 3x2 / T / F
75	75	0.8 - 2.0	TYPE / C/T / 3x3 / T / F	TYPE / 2C/T / 3x3 / T / F	TYPE / 3C/T / 3x3 / T / F
100	50	0.8 - 2.0	TYPE / C/T / 4x2 / T / F	TYPE / 2C/T / 4x2 / T / F	TYPE / 3C/T / 4x2 / T / F
100	75	0.8 - 2.0	TYPE / C/T / 4x3 / T / F	TYPE / 2C/T / 4x3 / T / F	TYPE / 3C/T / 4x3 / T / F
100	100	0.8 - 2.0	TYPE / C/T / 4x4 / T / F	TYPE / 2C/T / 4x4 / T / F	TYPE / 3C/T / 4x4 / T / F
150	50	0.8 - 2.0	TYPE / C/T / 6x2 / T / F	TYPE / 2C/T / 6x2 / T / F	TYPE / 3C/T / 6x2 / T / F
150	75	0.8 - 2.0	TYPE / C/T / 6x3 / T / F	TYPE / 2C/T / 6x3 / T / F	TYPE / 3C/T / 6x3 / T / F
150	100	0.8 - 2.0	TYPE / C/T / 6x4 / T / F	TYPE / 2C/T / 6x4 / T / F	TYPE / 3C/T / 6x4 / T / F
150	150	1.2 - 3.0	TYPE / C/T / 6x6 / T / F	TYPE / 2C/T / 6x6 / T / F	TYPE / 3C/T / 6x6 / T / F
225	50	1.2 - 3.0	TYPE / C/T / 9x2 / T / F	TYPE / 2C/T / 9x2 / T / F	TYPE / 3C/T / 9x2 / T / F
225	75	1.2 - 3.0	TYPE / C/T / 9x3 / T / F	TYPE / 2C/T / 9x3 / T / F	TYPE / 3C/T / 9x3 / T / F
225	100	1.2 - 3.0	TYPE / C/T / 9x4 / T / F	TYPE / 2C/T / 9x4 / T / F	TYPE / 3C/T / 9x4 / T / F
225	150	1.2 - 3.0	TYPE / C/T / 9x6 / T / F	TYPE / 2C/T / 9x6 / T / F	TYPE / 3C/T / 9x6 / T / F
225	225	1.2 - 3.0	TYPE / C/T / 9x9 / T / F	TYPE / 2C/T / 9x9 / T / F	TYPE / 3C/T / 9x9 / T / F
300	50	1.2 - 3.0	TYPE / C/T / 12x2 / T / F	TYPE / 2C/T / 12x2 / T / F	TYPE / 3C/T / 12x2 / T / F
300	75	1.2 - 3.0	TYPE / C/T / 12x3 / T / F	TYPE / 2C/T / 12x3 / T / F	TYPE / 3C/T / 12x3 / T / F
300	100	1.2 - 3.0	TYPE / C/T / 12x4 / T / F	TYPE / 2C/T / 12x4 / T / F	TYPE / 3C/T / 12x4 / T / F
300	150	1.2 - 3.0	TYPE / C/T / 12x6 / T / F	TYPE / 2C/T / 12x6 / T / F	TYPE / 3C/T / 12x6 / T / F
300	225	1.2 - 3.0	TYPE / C/T / 12x9 / T / F	TYPE / 2C/T / 12x9 / T / F	TYPE / 3C/T / 12x9 / T / F
300	300	1.2 - 3.0	TYPE / C/T / 12x12 / T / F	TYPE / 2C/T / 12x12 / T / F	TYPE / 3C/T / 12x12 / T / F



**JET LOCK TRUNKING**

**SCREW FIX TRUNKING**

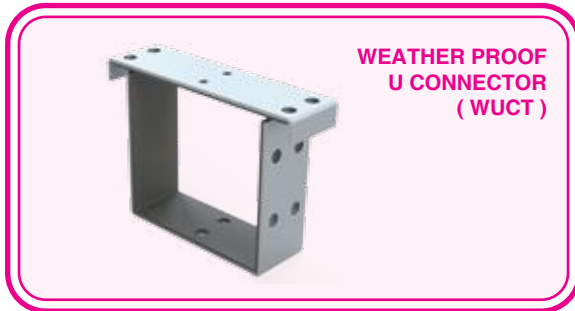
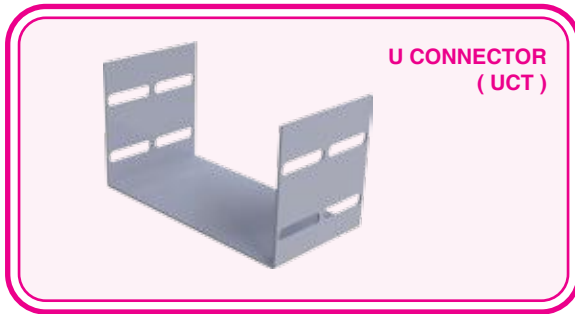
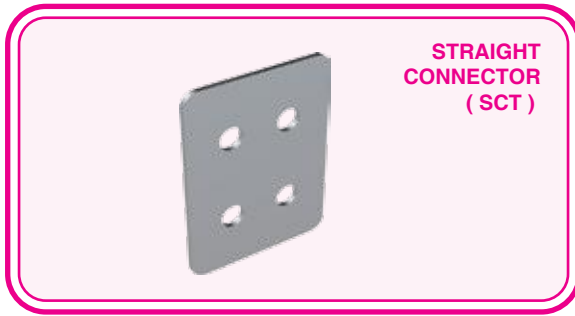


**SNAP ON TRUNKING**

**WEATHER PROOF TRUNKING**



## TRUNKING CONNECTORS



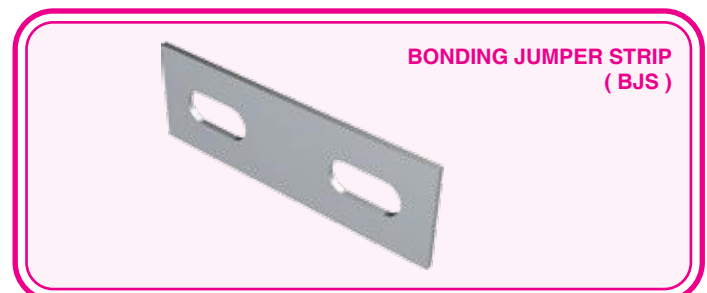
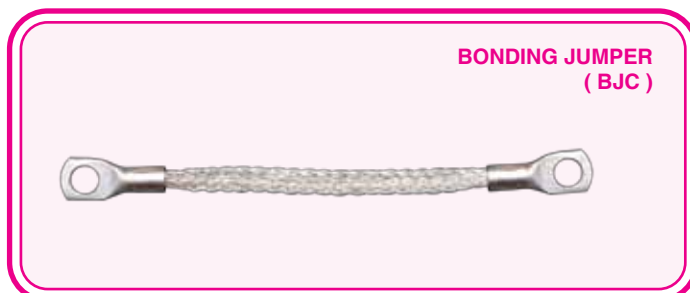
WIDTH mm	HEIGHT mm	THICKNESS ( T ) mm	TRUNKING CONNECTORS
50	50	0.8 - 2.0	TYPE / C/T / 2x2 / T / F
75	50	0.8 - 2.0	TYPE / C/T / 3x2 / T / F
75	75	0.8 - 2.0	TYPE / C/T / 3x3 / T / F
100	50	0.8 - 2.0	TYPE / C/T / 4x2 / T / F
100	75	0.8 - 2.0	TYPE / C/T / 4x3 / T / F
100	100	0.8 - 2.0	TYPE / C/T / 4x4 / T / F
150	50	0.8 - 2.0	TYPE / C/T / 6x2 / T / F
150	75	0.8 - 2.0	TYPE / C/T / 6x3 / T / F
150	100	0.8 - 2.0	TYPE / C/T / 6x4 / T / F
150	150	1.2 - 3.0	TYPE / C/T / 6x6 / T / F
225	50	1.2 - 3.0	TYPE / C/T / 9x2 / T / F
225	75	1.2 - 3.0	TYPE / C/T / 9x3 / T / F
225	100	1.2 - 3.0	TYPE / C/T / 9x4 / T / F
225	150	1.2 - 3.0	TYPE / C/T / 9x6 / T / F
225	225	1.2 - 3.0	TYPE / C/T / 9x9 / T / F
300	50	1.2 - 3.0	TYPE / C/T / 12x2 / T / F
300	75	1.2 - 3.0	TYPE / C/T / 12x3 / T / F
300	100	1.2 - 3.0	TYPE / C/T / 12x4 / T / F
300	150	1.2 - 3.0	TYPE / C/T / 12x6 / T / F
300	225	1.2 - 3.0	TYPE / C/T / 12x9 / T / F
300	300	1.2 - 3.0	TYPE / C/T / 12x12 / T / F

### TRUNKING CONNECTORS

- ★ Straight Connectors ( **SCT** ) are supplied with trunkings with a set of pan Philip M6 X 12 machine screw, nut and washer. To be ordered separately.
- ★ U Connectors ( **UCT** ) are optional and are supplied with trunkings with a set of pan Philip M6 X 12 machine screw, nut and washer. To be ordered separately.
- ★ Weather Proof IP Rated U Connectors ( **WUCT** ) are supplied with trunkings with a set of pan Philip M6 X 12 machine screw, nut and washer. To be ordered separately.

### BONDING JUMPER

- ★ Bonding Jumpers or Earthing Strips ( **BJTR** ) for the trunkings are supplied in a pack of 25 numbers.
- ★ Bonding Jumpers are required to be ordered separately.



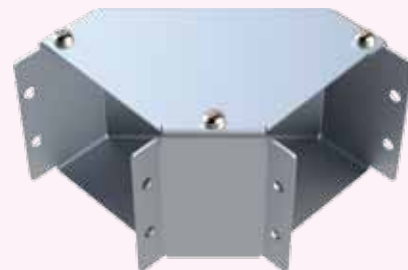
# SURFACE CABLE TRUNKINGS

## BEND TOP COVER

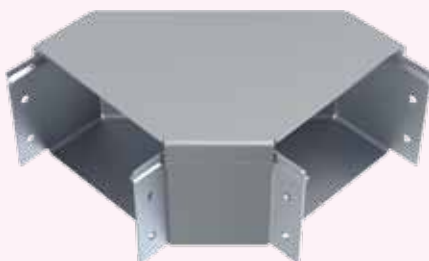
WIDTH mm	HEIGHT mm	THICKNESS (T) mm	SINGLE COMPARTMENT	TWO COMPARTMENT	THREE COMPARTMENT
50	50	0.8 - 2.0	TYPE / BTC / A / 2x2 / T / F	TYPE / 2BTC / A / 2x2 / T / F	TYPE / 3BTC / A / 2x2 / T / F
75	50	0.8 - 2.0	TYPE / BTC / A / 3x2 / T / F	TYPE / 2BTC / A / 3x2 / T / F	TYPE / 3BTC / A / 3x2 / T / F
75	75	0.8 - 2.0	TYPE / BTC / A / 3x3 / T / F	TYPE / 2BTC / A / 3x3 / T / F	TYPE / 3BTC / A / 3x3 / T / F
100	50	0.8 - 2.0	TYPE / BTC / A / 4x2 / T / F	TYPE / 2BTC / A / 4x2 / T / F	TYPE / 3BTC / A / 4x2 / T / F
100	75	0.8 - 2.0	TYPE / BTC / A / 4x3 / T / F	TYPE / 2BTC / A / 4x3 / T / F	TYPE / 3BTC / A / 4x3 / T / F
100	100	0.8 - 2.0	TYPE / BTC / A / 4x4 / T / F	TYPE / 2BTC / A / 4x4 / T / F	TYPE / 3BTC / A / 4x4 / T / F
150	50	0.8 - 2.0	TYPE / BTC / A / 6x2 / T / F	TYPE / 2BTC / A / 6x2 / T / F	TYPE / 3BTC / A / 6x2 / T / F
150	75	0.8 - 2.0	TYPE / BTC / A / 6x3 / T / F	TYPE / 2BTC / A / 6x3 / T / F	TYPE / 3BTC / A / 6x3 / T / F
150	100	0.8 - 2.0	TYPE / BTC / A / 6x4 / T / F	TYPE / 2BTC / A / 6x4 / T / F	TYPE / 3BTC / A / 6x4 / T / F
150	150	1.2 - 3.0	TYPE / BTC / A / 6x6 / T / F	TYPE / 2BTC / A / 6x6 / T / F	TYPE / 3BTC / A / 6x6 / T / F
225	50	1.2 - 3.0	TYPE / BTC / A / 9x2 / T / F	TYPE / 2BTC / A / 9x2 / T / F	TYPE / 3BTC / A / 9x2 / T / F
225	75	1.2 - 3.0	TYPE / BTC / A / 9x3 / T / F	TYPE / 2BTC / A / 9x3 / T / F	TYPE / 3BTC / A / 9x3 / T / F
225	100	1.2 - 3.0	TYPE / BTC / A / 9x4 / T / F	TYPE / 2BTC / A / 9x4 / T / F	TYPE / 3BTC / A / 9x4 / T / F
225	150	1.2 - 3.0	TYPE / BTC / A / 9x6 / T / F	TYPE / 2BTC / A / 9x6 / T / F	TYPE / 3BTC / A / 9x6 / T / F
225	225	1.2 - 3.0	TYPE / BTC / A / 9x9 / T / F	TYPE / 2BTC / A / 9x9 / T / F	TYPE / 3BTC / A / 9x9 / T / F
300	50	1.2 - 3.0	TYPE / BTC / A / 12x2 / T / F	TYPE / 2BTC / A / 12x2 / T / F	TYPE / 3BTC / A / 12x2 / T / F
300	75	1.2 - 3.0	TYPE / BTC / A / 12x3 / T / F	TYPE / 2BTC / A / 12x3 / T / F	TYPE / 3BTC / A / 12x3 / T / F
300	100	1.2 - 3.0	TYPE / BTC / A / 12x4 / T / F	TYPE / 2BTC / A / 12x4 / T / F	TYPE / 3BTC / A / 12x4 / T / F
300	150	1.2 - 3.0	TYPE / BTC / A / 12x6 / T / F	TYPE / 2BTC / A / 12x6 / T / F	TYPE / 3BTC / A / 12x6 / T / F
300	225	1.2 - 3.0	TYPE / BTC / A / 12x9 / T / F	TYPE / 2BTC / A / 12x9 / T / F	TYPE / 3BTC / A / 12x9 / T / F
300	300	1.2 - 3.0	TYPE / BTC / A / 12x12 / T / F	TYPE / 2BTC / A / 12x12 / T / F	TYPE / 3BTC / A / 12x12 / T / F



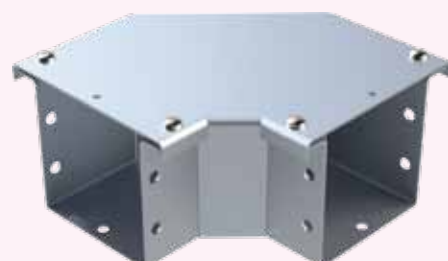
**JET LOCK  
BTC 90**



**SCREW FIX  
BTC 90**



**SNAP ON  
BTC 90**



**WEATHER  
PROOF  
BTC 90**

### Reference

- ★ Single Compartment Jet lock Bend Top Cover 90° width 100 mm & 100 mm side height **JL / BTC / 90 / 4x4 / T / F**
- ★ Single Compartment Screw fix Bend Top Cover 45° width 75 mm & 75 mm side height **SF / BTC / 45 / 3x3 / T / F**
- ★ Double Compartment Weather proof Bend Top Cover 45° width 100 mm & 100mm side height **WP / 2BTC / 45 / 4x4 / T / F**

# A CABLE MANAGEMENT SYSTEM

## BEND INSIDE COVER

WIDTH mm	HEIGHT mm	THICKNESS ( T ) mm	SINGLE COMPARTMENT	TWO COMPARTMENT	THREE COMPARTMENT
50	50	0.8 - 2.0	TYPE / BIC / A / 2x2 / T / F	TYPE / 2BIC / A / 2x2 / T / F	TYPE / 3BIC / A / 2x2 / T / F
75	50	0.8 - 2.0	TYPE / BIC / A / 3x2 / T / F	TYPE / 2BIC / A / 3x2 / T / F	TYPE / 3BIC / A / 3x2 / T / F
75	75	0.8 - 2.0	TYPE / BIC / A / 3x3 / T / F	TYPE / 2BIC / A / 3x3 / T / F	TYPE / 3BIC / A / 3x3 / T / F
100	50	0.8 - 2.0	TYPE / BIC / A / 4x2 / T / F	TYPE / 2BIC / A / 4x2 / T / F	TYPE / 3BIC / A / 4x2 / T / F
100	75	0.8 - 2.0	TYPE / BIC / A / 4x3 / T / F	TYPE / 2BIC / A / 4x3 / T / F	TYPE / 3BIC / A / 4x3 / T / F
100	100	0.8 - 2.0	TYPE / BIC / A / 4x4 / T / F	TYPE / 2BIC / A / 4x4 / T / F	TYPE / 3BIC / A / 4x4 / T / F
150	50	0.8 - 2.0	TYPE / BIC / A / 6x2 / T / F	TYPE / 2BIC / A / 6x2 / T / F	TYPE / 3BIC / A / 6x2 / T / F
150	75	0.8 - 2.0	TYPE / BIC / A / 6x3 / T / F	TYPE / 2BIC / A / 6x3 / T / F	TYPE / 3BIC / A / 6x3 / T / F
150	100	0.8 - 2.0	TYPE / BIC / A / 6x4 / T / F	TYPE / 2BIC / A / 6x4 / T / F	TYPE / 3BIC / A / 6x4 / T / F
150	150	1.2 - 3.0	TYPE / BIC / A / 6x6 / T / F	TYPE / 2BIC / A / 6x6 / T / F	TYPE / 3BIC / A / 6x6 / T / F
225	50	1.2 - 3.0	TYPE / BIC / A / 9x2 / T / F	TYPE / 2BIC / A / 9x2 / T / F	TYPE / 3BIC / A / 9x2 / T / F
225	75	1.2 - 3.0	TYPE / BIC / A / 9x3 / T / F	TYPE / 2BIC / A / 9x3 / T / F	TYPE / 3BIC / A / 9x3 / T / F
225	100	1.2 - 3.0	TYPE / BIC / A / 9x4 / T / F	TYPE / 2BIC / A / 9x4 / T / F	TYPE / 3BIC / A / 9x4 / T / F
225	150	1.2 - 3.0	TYPE / BIC / A / 9x6 / T / F	TYPE / 2BIC / A / 9x6 / T / F	TYPE / 3BIC / A / 9x6 / T / F
225	225	1.2 - 3.0	TYPE / BIC / A / 9x9 / T / F	TYPE / 2BIC / A / 9x9 / T / F	TYPE / 3BIC / A / 9x9 / T / F
300	50	1.2 - 3.0	TYPE / BIC / A / 12x2 / T / F	TYPE / 2BIC / A / 12x2 / T / F	TYPE / 3BIC / A / 12x2 / T / F
300	75	1.2 - 3.0	TYPE / BIC / A / 12x3 / T / F	TYPE / 2BIC / A / 12x3 / T / F	TYPE / 3BIC / A / 12x3 / T / F
300	100	1.2 - 3.0	TYPE / BIC / A / 12x4 / T / F	TYPE / 2BIC / A / 12x4 / T / F	TYPE / 3BIC / A / 12x4 / T / F
300	150	1.2 - 3.0	TYPE / BIC / A / 12x6 / T / F	TYPE / 2BIC / A / 12x6 / T / F	TYPE / 3BIC / A / 12x6 / T / F
300	225	1.2 - 3.0	TYPE / BIC / A / 12x9 / T / F	TYPE / 2BIC / A / 12x9 / T / F	TYPE / 3BIC / A / 12x9 / T / F
300	300	1.2 - 3.0	TYPE / BIC / A / 12x12 / T / F	TYPE / 2BIC / A / 12x12 / T / F	TYPE / 3BIC / A / 12x12 / T / F



**JET LOCK  
BIC 90**



**SCREW FIX  
BIC 90**



**SNAP ON  
BIC 90**



**WEATHER PROOF  
BIC 90**

### Reference

- ★ Single Compartment Jet lock Bend Inside Cover 90° width 100 mm & 100 mm side height **JL / BIC / 90 / 4x4 / T / F**
- ★ Single Compartment Snap on Bend Inside Cover 45° width 75 mm & 75 mm side height **SN / BIC / 45 / 3x3 / T / F**
- ★ Double Compartment Weather proof Bend Inside Cover 45° width 100 mm & 100mm side height **WP / 2BIC / 45 / 4x4 / T / F**



# SURFACE CABLE TRUNKINGS

## BEND OUTSIDE COVER

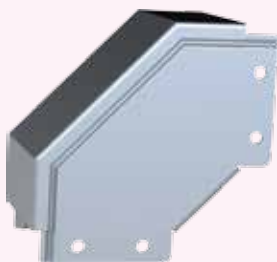
WIDTH mm	HEIGHT mm	THICKNESS ( T ) mm	SINGLE COMPARTMENT	TWO COMPARTMENT	THREE COMPARTMENT
50	50	0.8 - 2.0	TYPE / BOC / A / 2x2 / T / F	TYPE / 2BOC / A / 2x2 / T / F	TYPE / 3BOC / A / 2x2 / T / F
75	50	0.8 - 2.0	TYPE / BOC / A / 3x2 / T / F	TYPE / 2BOC / A / 3x2 / T / F	TYPE / 3BOC / A / 3x2 / T / F
75	75	0.8 - 2.0	TYPE / BOC / A / 3x3 / T / F	TYPE / 2BOC / A / 3x3 / T / F	TYPE / 3BOC / A / 3x3 / T / F
100	50	0.8 - 2.0	TYPE / BOC / A / 4x2 / T / F	TYPE / 2BOC / A / 4x2 / T / F	TYPE / 3BOC / A / 4x2 / T / F
100	75	0.8 - 2.0	TYPE / BOC / A / 4x3 / T / F	TYPE / 2BOC / A / 4x3 / T / F	TYPE / 3BOC / A / 4x3 / T / F
100	100	0.8 - 2.0	TYPE / BOC / A / 4x4 / T / F	TYPE / 2BOC / A / 4x4 / T / F	TYPE / 3BOC / A / 4x4 / T / F
150	50	0.8 - 2.0	TYPE / BOC / A / 6x2 / T / F	TYPE / 2BOC / A / 6x2 / T / F	TYPE / 3BOC / A / 6x2 / T / F
150	75	0.8 - 2.0	TYPE / BOC / A / 6x3 / T / F	TYPE / 2BOC / A / 6x3 / T / F	TYPE / 3BOC / A / 6x3 / T / F
150	100	0.8 - 2.0	TYPE / BOC / A / 6x4 / T / F	TYPE / 2BOC / A / 6x4 / T / F	TYPE / 3BOC / A / 6x4 / T / F
150	150	1.2 - 3.0	TYPE / BOC / A / 6x6 / T / F	TYPE / 2BOC / A / 6x6 / T / F	TYPE / 3BOC / A / 6x6 / T / F
225	50	1.2 - 3.0	TYPE / BOC / A / 9x2 / T / F	TYPE / 2BOC / A / 9x2 / T / F	TYPE / 3BOC / A / 9x2 / T / F
225	75	1.2 - 3.0	TYPE / BOC / A / 9x3 / T / F	TYPE / 2BOC / A / 9x3 / T / F	TYPE / 3BOC / A / 9x3 / T / F
225	100	1.2 - 3.0	TYPE / BOC / A / 9x4 / T / F	TYPE / 2BOC / A / 9x4 / T / F	TYPE / 3BOC / A / 9x4 / T / F
225	150	1.2 - 3.0	TYPE / BOC / A / 9x6 / T / F	TYPE / 2BOC / A / 9x6 / T / F	TYPE / 3BOC / A / 9x6 / T / F
225	225	1.2 - 3.0	TYPE / BOC / A / 9x9 / T / F	TYPE / 2BOC / A / 9x9 / T / F	TYPE / 3BOC / A / 9x9 / T / F
300	50	1.2 - 3.0	TYPE / BOC / A / 12x2 / T / F	TYPE / 2BOC / A / 12x2 / T / F	TYPE / 3BOC / A / 12x2 / T / F
300	75	1.2 - 3.0	TYPE / BOC / A / 12x3 / T / F	TYPE / 2BOC / A / 12x3 / T / F	TYPE / 3BOC / A / 12x3 / T / F
300	100	1.2 - 3.0	TYPE / BOC / A / 12x4 / T / F	TYPE / 2BOC / A / 12x4 / T / F	TYPE / 3BOC / A / 12x4 / T / F
300	150	1.2 - 3.0	TYPE / BOC / A / 12x6 / T / F	TYPE / 2BOC / A / 12x6 / T / F	TYPE / 3BOC / A / 12x6 / T / F
300	225	1.2 - 3.0	TYPE / BOC / A / 12x9 / T / F	TYPE / 2BOC / A / 12x9 / T / F	TYPE / 3BOC / A / 12x9 / T / F
300	300	1.2 - 3.0	TYPE / BOC / A / 12x12 / T / F	TYPE / 2BOC / A / 12x12 / T / F	TYPE / 3BOC / A / 12x12 / T / F



**JET LOCK  
BOC 90**



**SCREW FIX  
BOC 90**



**SNAP ON  
BOC 90**



**WEATHER  
PROOF  
BOC 90**

### Reference

- ★ Single Compartment Snap on Bend Outside Cover 90° width 100 mm & 100 mm side height **SN / BOC / 90 / 4x4 / T / F**
- ★ Double Compartment Weather proof Bend Outside Cover 45° width 150 mm & 150mm side height **WP / 2BOC / 45 / 6x6 / T / F**
- ★ Single Compartment Screw fix Bend Outside Cover 45° width 75 mm & 75 mm side height **SF / BOC / 45 / 3x3 / T / F**



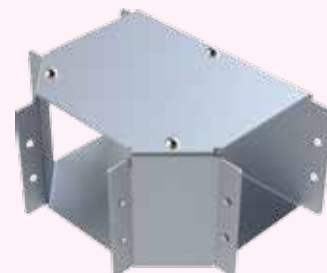
# A CABLE MANAGEMENT SYSTEM

## TEE TOP COVER

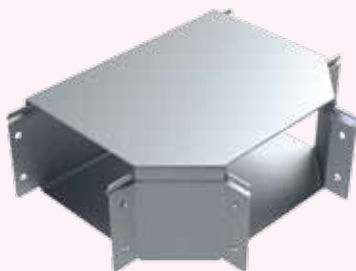
WIDTH mm	HEIGHT mm	THICKNESS ( T ) mm	SINGLE COMPARTMENT	TWO COMPARTMENT	THREE COMPARTMENT
50	50	0.8 - 2.0	TYPE / TTC / 2x2 / T / F	TYPE / 2TTC / 2x2 / T / F	TYPE / 3TTC / 2x2 / T / F
75	50	0.8 - 2.0	TYPE / TTC / 3x2 / T / F	TYPE / 2TTC / 3x2 / T / F	TYPE / 3TTC / 3x2 / T / F
75	75	0.8 - 2.0	TYPE / TTC / 3x3 / T / F	TYPE / 2TTC / 3x3 / T / F	TYPE / 3TTC / 3x3 / T / F
100	50	0.8 - 2.0	TYPE / TTC / 4x2 / T / F	TYPE / 2TTC / 4x2 / T / F	TYPE / 3TTC / 4x2 / T / F
100	75	0.8 - 2.0	TYPE / TTC / 4x3 / T / F	TYPE / 2TTC / 4x3 / T / F	TYPE / 3TTC / 4x3 / T / F
100	100	0.8 - 2.0	TYPE / TTC / 4x4 / T / F	TYPE / 2TTC / 4x4 / T / F	TYPE / 3TTC / 4x4 / T / F
150	50	0.8 - 2.0	TYPE / TTC / 6x2 / T / F	TYPE / 2TTC / 6x2 / T / F	TYPE / 3TTC / 6x2 / T / F
150	75	0.8 - 2.0	TYPE / TTC / 6x3 / T / F	TYPE / 2TTC / 6x3 / T / F	TYPE / 3TTC / 6x3 / T / F
150	100	0.8 - 2.0	TYPE / TTC / 6x4 / T / F	TYPE / 2TTC / 6x4 / T / F	TYPE / 3TTC / 6x4 / T / F
150	150	1.2 - 3.0	TYPE / TTC / 6x6 / T / F	TYPE / 2TTC / 6x6 / T / F	TYPE / 3TTC / 6x6 / T / F
225	50	1.2 - 3.0	TYPE / TTC / 9x2 / T / F	TYPE / 2TTC / 9x2 / T / F	TYPE / 3TTC / 9x2 / T / F
225	75	1.2 - 3.0	TYPE / TTC / 9x3 / T / F	TYPE / 2TTC / 9x3 / T / F	TYPE / 3TTC / 9x3 / T / F
225	100	1.2 - 3.0	TYPE / TTC / 9x4 / T / F	TYPE / 2TTC / 9x4 / T / F	TYPE / 3TTC / 9x4 / T / F
225	150	1.2 - 3.0	TYPE / TTC / 9x6 / T / F	TYPE / 2TTC / 9x6 / T / F	TYPE / 3TTC / 9x6 / T / F
225	225	1.2 - 3.0	TYPE / TTC / 9x9 / T / F	TYPE / 2TTC / 9x9 / T / F	TYPE / 3TTC / 9x9 / T / F
300	50	1.2 - 3.0	TYPE / TTC / 12x2 / T / F	TYPE / 2TTC / 12x2 / T / F	TYPE / 3TTC / 12x2 / T / F
300	75	1.2 - 3.0	TYPE / TTC / 12x3 / T / F	TYPE / 2TTC / 12x3 / T / F	TYPE / 3TTC / 12x3 / T / F
300	100	1.2 - 3.0	TYPE / TTC / 12x4 / T / F	TYPE / 2TTC / 12x4 / T / F	TYPE / 3TTC / 12x4 / T / F
300	150	1.2 - 3.0	TYPE / TTC / 12x6 / T / F	TYPE / 2TTC / 12x6 / T / F	TYPE / 3TTC / 12x6 / T / F
300	225	1.2 - 3.0	TYPE / TTC / 12x9 / T / F	TYPE / 2TTC / 12x9 / T / F	TYPE / 3TTC / 12x9 / T / F
300	300	1.2 - 3.0	TYPE / TTC / 12x12 / T / F	TYPE / 2TTC / 12x12 / T / F	TYPE / 3TTC / 12x12 / T / F



**JET LOCK  
TTC**



**SCREW FIX  
TTC**



**SNAP ON  
TTC**



**WEATHER  
PROOF  
TTC**

### Reference

- ★ Double Compartment Weather proof Tee Top Cover width 100 mm & 100mm side height **WP / 2TTC / 4x4 / T / F**
- ★ Single Compartment Jet lock Tee Top Cover width 50 mm & 50 mm side height **JL / TTC / 2x2 / T / F**
- ★ Single Compartment Snap on Tee Top Cover width 75 mm & 75 mm side height **SN / TTC / 3x3 / T / F**

# SURFACE CABLE TRUNKINGS

## TEE INSIDE COVER

WIDTH mm	HEIGHT mm	THICKNESS ( T ) mm	SINGLE COMPARTMENT	TWO COMPARTMENT	THREE COMPARTMENT
50	50	0.8 - 2.0	TYPE / TIC / 2x2 / T / F	TYPE / 2TIC / 2x2 / T / F	TYPE / 3TIC / 2x2 / T / F
75	50	0.8 - 2.0	TYPE / TIC / 3x2 / T / F	TYPE / 2TIC / 3x2 / T / F	TYPE / 3TIC / 3x2 / T / F
75	75	0.8 - 2.0	TYPE / TIC / 3x3 / T / F	TYPE / 2TIC / 3x3 / T / F	TYPE / 3TIC / 3x3 / T / F
100	50	0.8 - 2.0	TYPE / TIC / 4x2 / T / F	TYPE / 2TIC / 4x2 / T / F	TYPE / 3TIC / 4x2 / T / F
100	75	0.8 - 2.0	TYPE / TIC / 4x3 / T / F	TYPE / 2TIC / 4x3 / T / F	TYPE / 3TIC / 4x3 / T / F
100	100	0.8 - 2.0	TYPE / TIC / 4x4 / T / F	TYPE / 2TIC / 4x4 / T / F	TYPE / 3TIC / 4x4 / T / F
150	50	0.8 - 2.0	TYPE / TIC / 6x2 / T / F	TYPE / 2TIC / 6x2 / T / F	TYPE / 3TIC / 6x2 / T / F
150	75	0.8 - 2.0	TYPE / TIC / 6x3 / T / F	TYPE / 2TIC / 6x3 / T / F	TYPE / 3TIC / 6x3 / T / F
150	100	0.8 - 2.0	TYPE / TIC / 6x4 / T / F	TYPE / 2TIC / 6x4 / T / F	TYPE / 3TIC / 6x4 / T / F
150	150	1.2 - 3.0	TYPE / TIC / 6x6 / T / F	TYPE / 2TIC / 6x6 / T / F	TYPE / 3TIC / 6x6 / T / F
225	50	1.2 - 3.0	TYPE / TIC / 9x2 / T / F	TYPE / 2TIC / 9x2 / T / F	TYPE / 3TIC / 9x2 / T / F
225	75	1.2 - 3.0	TYPE / TIC / 9x3 / T / F	TYPE / 2TIC / 9x3 / T / F	TYPE / 3TIC / 9x3 / T / F
225	100	1.2 - 3.0	TYPE / TIC / 9x4 / T / F	TYPE / 2TIC / 9x4 / T / F	TYPE / 3TIC / 9x4 / T / F
225	150	1.2 - 3.0	TYPE / TIC / 9x6 / T / F	TYPE / 2TIC / 9x6 / T / F	TYPE / 3TIC / 9x6 / T / F
225	225	1.2 - 3.0	TYPE / TIC / 9x9 / T / F	TYPE / 2TIC / 9x9 / T / F	TYPE / 3TIC / 9x9 / T / F
300	50	1.2 - 3.0	TYPE / TIC / 12x2 / T / F	TYPE / 2TIC / 12x2 / T / F	TYPE / 3TIC / 12x2 / T / F
300	75	1.2 - 3.0	TYPE / TIC / 12x3 / T / F	TYPE / 2TIC / 12x3 / T / F	TYPE / 3TIC / 12x3 / T / F
300	100	1.2 - 3.0	TYPE / TIC / 12x4 / T / F	TYPE / 2TIC / 12x4 / T / F	TYPE / 3TIC / 12x4 / T / F
300	150	1.2 - 3.0	TYPE / TIC / 12x6 / T / F	TYPE / 2TIC / 12x6 / T / F	TYPE / 3TIC / 12x6 / T / F
300	225	1.2 - 3.0	TYPE / TIC / 12x9 / T / F	TYPE / 2TIC / 12x9 / T / F	TYPE / 3TIC / 12x9 / T / F
300	300	1.2 - 3.0	TYPE / TIC / 12x12 / T / F	TYPE / 2TIC / 12x12 / T / F	TYPE / 3TIC / 12x12 / T / F



**JET LOCK  
TIC**



**SCREW FIX  
TIC**



**SNAP ON  
TIC**



**WEATHER  
PROOF  
TIC**

### Reference

- ★ Single Compartment Jet lock Tee Inside Cover width 100 mm & 100 mm side height **JL / TIC / 4x4 / T / F**
- ★ Single Compartment Snap on Tee Inside Cover width 75 mm & 75 mm side height **SN / TIC / 3x3 / T / F**
- ★ Double Compartment Weather proof Tee Inside Cover width 100 mm & 100mm side height **WP / 2TIC / 4x4 / T / F**

# A CABLE MANAGEMENT SYSTEM

## TEE OUTSIDE COVER

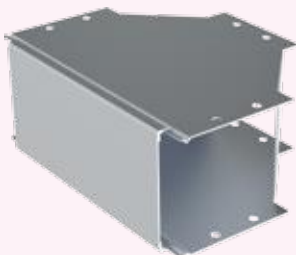
WIDTH mm	HEIGHT mm	THICKNESS ( T ) mm	SINGLE COMPARTMENT	TWO COMPARTMENT	THREE COMPARTMENT
50	50	0.8 - 2.0	TYPE / TOC / 2x2 / T / F	TYPE / 2TOC / 2x2 / T / F	TYPE / 3TOC / 2x2 / T / F
75	50	0.8 - 2.0	TYPE / TOC / 3x2 / T / F	TYPE / 2TOC / 3x2 / T / F	TYPE / 3TOC / 3x2 / T / F
75	75	0.8 - 2.0	TYPE / TOC / 3x3 / T / F	TYPE / 2TOC / 3x3 / T / F	TYPE / 3TOC / 3x3 / T / F
100	50	0.8 - 2.0	TYPE / TOC / 4x2 / T / F	TYPE / 2TOC / 4x2 / T / F	TYPE / 3TOC / 4x2 / T / F
100	75	0.8 - 2.0	TYPE / TOC / 4x3 / T / F	TYPE / 2TOC / 4x3 / T / F	TYPE / 3TOC / 4x3 / T / F
100	100	0.8 - 2.0	TYPE / TOC / 4x4 / T / F	TYPE / 2TOC / 4x4 / T / F	TYPE / 3TOC / 4x4 / T / F
150	50	0.8 - 2.0	TYPE / TOC / 6x2 / T / F	TYPE / 2TOC / 6x2 / T / F	TYPE / 3TOC / 6x2 / T / F
150	75	0.8 - 2.0	TYPE / TOC / 6x3 / T / F	TYPE / 2TOC / 6x3 / T / F	TYPE / 3TOC / 6x3 / T / F
150	100	0.8 - 2.0	TYPE / TOC / 6x4 / T / F	TYPE / 2TOC / 6x4 / T / F	TYPE / 3TOC / 6x4 / T / F
150	150	1.2 - 3.0	TYPE / TOC / 6x6 / T / F	TYPE / 2TOC / 6x6 / T / F	TYPE / 3TOC / 6x6 / T / F
225	50	1.2 - 3.0	TYPE / TOC / 9x2 / T / F	TYPE / 2TOC / 9x2 / T / F	TYPE / 3TOC / 9x2 / T / F
225	75	1.2 - 3.0	TYPE / TOC / 9x3 / T / F	TYPE / 2TOC / 9x3 / T / F	TYPE / 3TOC / 9x3 / T / F
225	100	1.2 - 3.0	TYPE / TOC / 9x4 / T / F	TYPE / 2TOC / 9x4 / T / F	TYPE / 3TOC / 9x4 / T / F
225	150	1.2 - 3.0	TYPE / TOC / 9x6 / T / F	TYPE / 2TOC / 9x6 / T / F	TYPE / 3TOC / 9x6 / T / F
225	225	1.2 - 3.0	TYPE / TOC / 9x9 / T / F	TYPE / 2TOC / 9x9 / T / F	TYPE / 3TOC / 9x9 / T / F
300	50	1.2 - 3.0	TYPE / TOC / 12x2 / T / F	TYPE / 2TOC / 12x2 / T / F	TYPE / 3TOC / 12x2 / T / F
300	75	1.2 - 3.0	TYPE / TOC / 12x3 / T / F	TYPE / 2TOC / 12x3 / T / F	TYPE / 3TOC / 12x3 / T / F
300	100	1.2 - 3.0	TYPE / TOC / 12x4 / T / F	TYPE / 2TOC / 12x4 / T / F	TYPE / 3TOC / 12x4 / T / F
300	150	1.2 - 3.0	TYPE / TOC / 12x6 / T / F	TYPE / 2TOC / 12x6 / T / F	TYPE / 3TOC / 12x6 / T / F
300	225	1.2 - 3.0	TYPE / TOC / 12x9 / T / F	TYPE / 2TOC / 12x9 / T / F	TYPE / 3TOC / 12x9 / T / F
300	300	1.2 - 3.0	TYPE / TOC / 12x12 / T / F	TYPE / 2TOC / 12x12 / T / F	TYPE / 3TOC / 12x12 / T / F



**JET LOCK  
TOC**



**SCREW FIX  
TOC**



**SNAP ON  
TOC**



**WEATHER  
PROOF  
TOC**

### Reference

- ★ Single Compartment Jet lock Tee Outside Cover width 100 mm & 100 mm side height **JL / TOC / 4x4 / T / F**
- ★ Single Compartment Snap on Tee Outside Cover width 75 mm & 75 mm side height **SN / TOC / 3x3 / T / F**
- ★ Double Compartment Weather proof Tee Outside Cover width 100 mm & 100mm side height **WP / 2TOC / 4x4 / T / F**

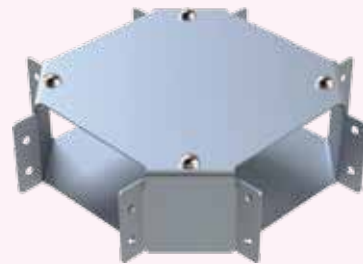
# SURFACE CABLE TRUNKINGS

## CROSS TOP COVER

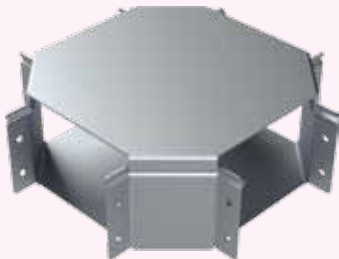
WIDTH mm	HEIGHT mm	THICKNESS ( T ) mm	SINGLE COMPARTMENT	TWO COMPARTMENT	THREE COMPARTMENT
50	50	0.8 - 2.0	TYPE / CTC / 2x2 / T / F	TYPE / 2CTC / 2x2 / T / F	TYPE / 3CTC / 2x2 / T / F
75	50	0.8 - 2.0	TYPE / CTC / 3x2 / T / F	TYPE / 2CTC / 3x2 / T / F	TYPE / 3CTC / 3x2 / T / F
75	75	0.8 - 2.0	TYPE / CTC / 3x3 / T / F	TYPE / 2CTC / 3x3 / T / F	TYPE / 3CTC / 3x3 / T / F
100	50	0.8 - 2.0	TYPE / CTC / 4x2 / T / F	TYPE / 2CTC / 4x2 / T / F	TYPE / 3CTC / 4x2 / T / F
100	75	0.8 - 2.0	TYPE / CTC / 4x3 / T / F	TYPE / 2CTC / 4x3 / T / F	TYPE / 3CTC / 4x3 / T / F
100	100	0.8 - 2.0	TYPE / CTC / 4x4 / T / F	TYPE / 2CTC / 4x4 / T / F	TYPE / 3CTC / 4x4 / T / F
150	50	0.8 - 2.0	TYPE / CTC / 6x2 / T / F	TYPE / 2CTC / 6x2 / T / F	TYPE / 3CTC / 6x2 / T / F
150	75	0.8 - 2.0	TYPE / CTC / 6x3 / T / F	TYPE / 2CTC / 6x3 / T / F	TYPE / 3CTC / 6x3 / T / F
150	100	0.8 - 2.0	TYPE / CTC / 6x4 / T / F	TYPE / 2CTC / 6x4 / T / F	TYPE / 3CTC / 6x4 / T / F
150	150	1.2 - 3.0	TYPE / CTC / 6x6 / T / F	TYPE / 2CTC / 6x6 / T / F	TYPE / 3CTC / 6x6 / T / F
225	50	1.2 - 3.0	TYPE / CTC / 9x2 / T / F	TYPE / 2CTC / 9x2 / T / F	TYPE / 3CTC / 9x2 / T / F
225	75	1.2 - 3.0	TYPE / CTC / 9x3 / T / F	TYPE / 2CTC / 9x3 / T / F	TYPE / 3CTC / 9x3 / T / F
225	100	1.2 - 3.0	TYPE / CTC / 9x4 / T / F	TYPE / 2CTC / 9x4 / T / F	TYPE / 3CTC / 9x4 / T / F
225	150	1.2 - 3.0	TYPE / CTC / 9x6 / T / F	TYPE / 2CTC / 9x6 / T / F	TYPE / 3CTC / 9x6 / T / F
225	225	1.2 - 3.0	TYPE / CTC / 9x9 / T / F	TYPE / 2CTC / 9x9 / T / F	TYPE / 3CTC / 9x9 / T / F
300	50	1.2 - 3.0	TYPE / CTC / 12x2 / T / F	TYPE / 2CTC / 12x2 / T / F	TYPE / 3CTC / 12x2 / T / F
300	75	1.2 - 3.0	TYPE / CTC / 12x3 / T / F	TYPE / 2CTC / 12x3 / T / F	TYPE / 3CTC / 12x3 / T / F
300	100	1.2 - 3.0	TYPE / CTC / 12x4 / T / F	TYPE / 2CTC / 12x4 / T / F	TYPE / 3CTC / 12x4 / T / F
300	150	1.2 - 3.0	TYPE / CTC / 12x6 / T / F	TYPE / 2CTC / 12x6 / T / F	TYPE / 3CTC / 12x6 / T / F
300	225	1.2 - 3.0	TYPE / CTC / 12x9 / T / F	TYPE / 2CTC / 12x9 / T / F	TYPE / 3CTC / 12x9 / T / F
300	300	1.2 - 3.0	TYPE / CTC / 12x12 / T / F	TYPE / 2CTC / 12x12 / T / F	TYPE / 3CTC / 12x12 / T / F



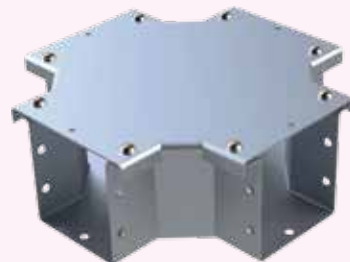
JET LOCK  
CTC



SCREW TYPE  
CTC



SNAP ON  
CTC



WEATHER  
PROOF  
CTC

### Reference

- ★ Single Compartment Screw fix Cross Top Cover width 75 mm & 75 mm side height **SF / CTC / 3x3 / T / F**
- ★ Single Compartment Jet lock Cross Top Cover width 100 mm & 100 mm side height **JL / CTC / 4x4 / T / F**
- ★ Double Compartment Weather proof Cross Top Cover width 225 mm & 225 mm side height **WP / 2CTC / 9x9 / T / F**

# A CABLE MANAGEMENT SYSTEM

## REDUCER

LARGER SIZE (W1) mm	REDUCING SIZE (W2) mm	THICKNESS ( T ) mm	SINGLE COMPARTMENT	TWO COMPARTMENT	THREE COMPARTMENT
75 X 50	50 X 50	0.8 - 2.0	TYPE / RS / W1-W2 / T / F	TYPE / 2RS / W1-W2 / T / F	TYPE / 3RS / W1-W2 / T / F
75 X 75	50 X 50	0.8 - 2.0	TYPE / RS / W1-W2 / T / F	TYPE / 2RS / W1-W2 / T / F	TYPE / 3RS / W1-W2 / T / F
100 X 50	75 X 75	0.8 - 2.0	TYPE / RS / W1-W2 / T / F	TYPE / 2RS / W1-W2 / T / F	TYPE / 3RS / W1-W2 / T / F
100 X 75	100 X 50	0.8 - 2.0	TYPE / RS / W1-W2 / T / F	TYPE / 2RS / W1-W2 / T / F	TYPE / 3RS / W1-W2 / T / F
100 X 100	100 X 75	0.8 - 2.0	TYPE / RS / W1-W2 / T / F	TYPE / 2RS / W1-W2 / T / F	TYPE / 3RS / W1-W2 / T / F
150 X 50	100 X 100	0.8 - 2.0	TYPE / RS / W1-W2 / T / F	TYPE / 2RS / W1-W2 / T / F	TYPE / 3RS / W1-W2 / T / F
150 X 75	150 X 50	0.8 - 2.0	TYPE / RS / W1-W2 / T / F	TYPE / 2RS / W1-W2 / T / F	TYPE / 3RS / W1-W2 / T / F
150 X 100	150 X 75	1.2 - 3.0	TYPE / RS / W1-W2 / T / F	TYPE / 2RS / W1-W2 / T / F	TYPE / 3RS / W1-W2 / T / F
150 X 150	150 X 100	1.2 - 3.0	TYPE / RS / W1-W2 / T / F	TYPE / 2RS / W1-W2 / T / F	TYPE / 3RS / W1-W2 / T / F
225 X 50	150 X 150	1.2 - 3.0	TYPE / RS / W1-W2 / T / F	TYPE / 2RS / W1-W2 / T / F	TYPE / 3RS / W1-W2 / T / F
225 X 75	225 X 50	1.2 - 3.0	TYPE / RS / W1-W2 / T / F	TYPE / 2RS / W1-W2 / T / F	TYPE / 3RS / W1-W2 / T / F
225 X 100	225 X 75	1.2 - 3.0	TYPE / RS / W1-W2 / T / F	TYPE / 2RS / W1-W2 / T / F	TYPE / 3RS / W1-W2 / T / F
225 X 150	225 X 100	1.2 - 3.0	TYPE / RS / W1-W2 / T / F	TYPE / 2RS / W1-W2 / T / F	TYPE / 3RS / W1-W2 / T / F
225 X 225	225 X 150	1.2 - 3.0	TYPE / RS / W1-W2 / T / F	TYPE / 2RS / W1-W2 / T / F	TYPE / 3RS / W1-W2 / T / F
300 X 50	225 X 225	1.2 - 3.0	TYPE / RS / W1-W2 / T / F	TYPE / 2RS / W1-W2 / T / F	TYPE / 3RS / W1-W2 / T / F
300 X 75	300 X 50	1.2 - 3.0	TYPE / RS / W1-W2 / T / F	TYPE / 2RS / W1-W2 / T / F	TYPE / 3RS / W1-W2 / T / F
300 X 100	300 X 75	1.2 - 3.0	TYPE / RS / W1-W2 / T / F	TYPE / 2RS / W1-W2 / T / F	TYPE / 3RS / W1-W2 / T / F
300 X 150	300 X 100	1.2 - 3.0	TYPE / RS / W1-W2 / T / F	TYPE / 2RS / W1-W2 / T / F	TYPE / 3RS / W1-W2 / T / F
300 X 225	300 X 150	1.2 - 3.0	TYPE / RS / W1-W2 / T / F	TYPE / 2RS / W1-W2 / T / F	TYPE / 3RS / W1-W2 / T / F



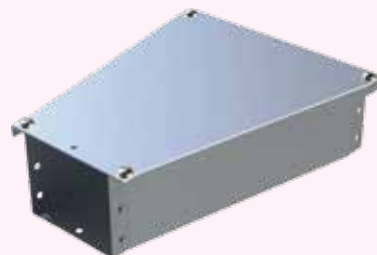
JET LOCK  
RS



SCREW FIX  
RS



SNAP ON  
RS



WEATHER  
PROOF  
RS

- ★ Double Compartment Weather proof Reducer **Width1** 100 X 100 mm & **Width 2** 50 X 50 mm side height **WP / RS / 4x4-2x2 / T / F**
- ★ Single Compartment Jet lock Reducer **Width1** 300 X 225 mm & **Width 2** 300 X 150 mm side height **JL / RS / 12x9-12x8 / T / F**
- ★ Single Compartment Screw fix Reducer **Width1** 150 X 75 mm & **Width 2** 100 X 50 mm side height **SF / RS / 6x3-4x2 / T / F**
- ★ The Reducer thickness will be considered of the higher width.

# SURFACE CABLE TRUNKINGS

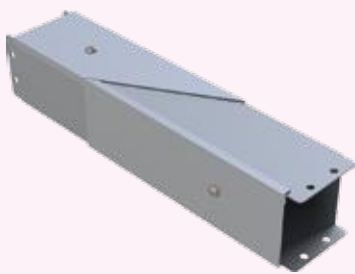
## FACE OFFSET TRUNKING

### FACE OFFSET LEFT

SIZE mm	THICKNESS (T) mm	FACE OFFSET LEFT
50 X50	0.8 - 2.0	TYPE / FOL / 2x2 / T / F
75 X 50	0.8 - 2.0	TYPE / FOL / 3x2 / T / F
75 X 75	0.8 - 2.0	TYPE / FOL / 3x3 / T / F
100 X 50	0.8 - 2.0	TYPE / FOL / 4x2 / T / F
100 X 75	0.8 - 2.0	TYPE / FOL / 4x3 / T / F
100 X 100	0.8 - 2.0	TYPE / FOL / 4x4 / T / F
150 X 50	0.8 - 2.0	TYPE / FOL / 6x2 / T / F
150 X 75	0.8 - 2.0	TYPE / FOL / 6x3 / T / F
150 X 100	0.8 - 2.0	TYPE / FOL / 6x4 / T / F
150 X 150	1.2 - 3.0	TYPE / FOL / 6x6 / T / F
225 X 50	1.2 - 3.0	TYPE / FOL / 9x2 / T / F
225 X 75	1.2 - 3.0	TYPE / FOL / 9x3 / T / F
225 X 100	1.2 - 3.0	TYPE / FOL / 9x4 / T / F
225 X 150	1.2 - 3.0	TYPE / FOL / 9x6 / T / F
225 X 225	1.2 - 3.0	TYPE / FOL / 9x9 / T / F
300 X 50	1.2 - 3.0	TYPE / FOL / 12x2 / T / F
300 X 75	1.2 - 3.0	TYPE / FOL / 12x3 / T / F
300 X 100	1.2 - 3.0	TYPE / FOL / 12x4 / T / F
300 X 150	1.2 - 3.0	TYPE / FOL / 12x6 / T / F
300 X 225	1.2 - 3.0	TYPE / FOL / 12x9 / T / F
300 X 300	1.2 - 3.0	TYPE / FOL / 12x12 / T / F

### FACE OFFSET RIGHT

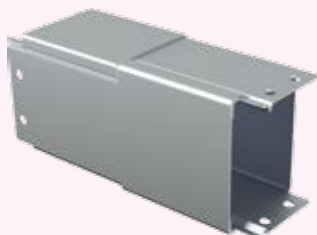
SIZE mm	THICKNESS (T) mm	FACE OFFSET RIGHT
50 X50	0.8 - 2.0	TYPE / FOR / 2x2 / T / F
75 X 50	0.8 - 2.0	TYPE / FOR / 3x2 / T / F
75 X 75	0.8 - 2.0	TYPE / FOR / 3x3 / T / F
100 X 50	0.8 - 2.0	TYPE / FOR / 4x2 / T / F
100 X 75	0.8 - 2.0	TYPE / FOR / 4x3 / T / F
100 X 100	0.8 - 2.0	TYPE / FOR / 4x4 / T / F
150 X 50	0.8 - 2.0	TYPE / FOR / 6x2 / T / F
150 X 75	0.8 - 2.0	TYPE / FOR / 6x3 / T / F
150 X 100	0.8 - 2.0	TYPE / FOR / 6x4 / T / F
150 X 150	1.2 - 3.0	TYPE / FOR / 6x6 / T / F
225 X 50	1.2 - 3.0	TYPE / FOR / 9x2 / T / F
225 X 75	1.2 - 3.0	TYPE / FOR / 9x3 / T / F
225 X 100	1.2 - 3.0	TYPE / FOR / 9x4 / T / F
225 X 150	1.2 - 3.0	TYPE / FOR / 9x6 / T / F
225 X 225	1.2 - 3.0	TYPE / FOR / 9x9 / T / F
300 X 50	1.2 - 3.0	TYPE / FOR / 12x2 / T / F
300 X 75	1.2 - 3.0	TYPE / FOR / 12x3 / T / F
300 X 100	1.2 - 3.0	TYPE / FOR / 12x4 / T / F
300 X 150	1.2 - 3.0	TYPE / FOR / 12x6 / T / F
300 X 225	1.2 - 3.0	TYPE / FOR / 12x9 / T / F
300 X 300	1.2 - 3.0	TYPE / FOR / 12x12 / T / F



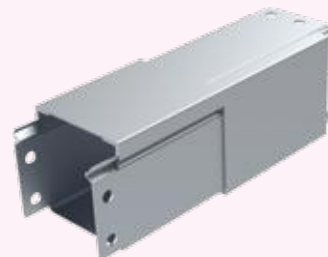
FACE OFFSET LEFT



FACE OFFSET RIGHT



SNAP ON FACE OFFSET LEFT



SNAP ON FACE OFFSET RIGHT

- ★ Single Compartment Jet lock Face Offseft Left width 100 mm & 100 mm side height **JL / FOL / 4x4 / T / F**
- ★ Single Compartment Screw fix Face Offseft Right width 75 mm & 75 mm side height **SF / FOR / 3x3 / T / F**
- ★ Double Compartment Snap on Face Offseft Right width 150 mm & 150mm side height **SN / 2FOR / 6x6 / T / F**



# A CABLE MANAGEMENT SYSTEM

## OFFSET TRUNKING

### OFFSET HORIZONTAL

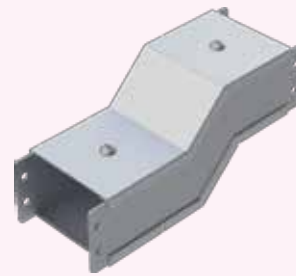
SIZE mm	THICKNESS ( T ) mm	OFFSET HORIZONTAL
50 X 50	0.8 - 2.0	TYPE / OH / 2x2 / T / F
75 X 50	0.8 - 2.0	TYPE / OH / 3x2 / T / F
75 X 75	0.8 - 2.0	TYPE / OH / 3x3 / T / F
100 X 50	0.8 - 2.0	TYPE / OH / 4x2 / T / F
100 X 75	0.8 - 2.0	TYPE / OH / 4x3 / T / F
100 X 100	0.8 - 2.0	TYPE / OH / 4x4 / T / F
150 X 50	0.8 - 2.0	TYPE / OH / 6x2 / T / F
150 X 75	0.8 - 2.0	TYPE / OH / 6x3 / T / F
150 X 100	0.8 - 2.0	TYPE / OH / 6x4 / T / F
150 X 150	1.2 - 3.0	TYPE / OH / 6x6 / T / F
225 X 50	1.2 - 3.0	TYPE / OH / 9x2 / T / F
225 X 75	1.2 - 3.0	TYPE / OH / 9x3 / T / F
225 X 100	1.2 - 3.0	TYPE / OH / 9x4 / T / F
225 X 150	1.2 - 3.0	TYPE / OH / 9x6 / T / F
225 X 225	1.2 - 3.0	TYPE / OH / 9x9 / T / F
300 X 50	1.2 - 3.0	TYPE / OH / 12x2 / T / F
300 X 75	1.2 - 3.0	TYPE / OH / 12x3 / T / F
300 X 100	1.2 - 3.0	TYPE / OH / 12x4 / T / F
300 X 150	1.2 - 3.0	TYPE / OH / 12x6 / T / F
300 X 225	1.2 - 3.0	TYPE / OH / 12x9 / T / F
300 X 300	1.2 - 3.0	TYPE / OH / 12x12 / T / F

### OFFSET VERTICAL

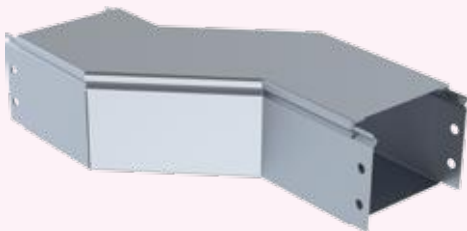
SIZE mm	THICKNESS mm	OFFSET VERTICAL
50 X 50	0.8 - 2.0	TYPE / OV / 2x2 / T / F
75 X 50	0.8 - 2.0	TYPE / OV / 3x2 / T / F
75 X 75	0.8 - 2.0	TYPE / OV / 3x3 / T / F
100 X 50	0.8 - 2.0	TYPE / OV / 4x2 / T / F
100 X 75	0.8 - 2.0	TYPE / OV / 4x3 / T / F
100 X 100	0.8 - 2.0	TYPE / OV / 4x4 / T / F
150 X 50	0.8 - 2.0	TYPE / OV / 6x2 / T / F
150 X 75	0.8 - 2.0	TYPE / OV / 6x3 / T / F
150 X 100	0.8 - 2.0	TYPE / OV / 6x4 / T / F
150 X 150	1.2 - 3.0	TYPE / OV / 6x6 / T / F
225 X 50	1.2 - 3.0	TYPE / OV / 9x2 / T / F
225 X 75	1.2 - 3.0	TYPE / OV / 9x3 / T / F
225 X 100	1.2 - 3.0	TYPE / OV / 9x4 / T / F
225 X 150	1.2 - 3.0	TYPE / OV / 9x6 / T / F
225 X 225	1.2 - 3.0	TYPE / OV / 9x9 / T / F
300 X 50	1.2 - 3.0	TYPE / OV / 12x2 / T / F
300 X 75	1.2 - 3.0	TYPE / OV / 12x3 / T / F
300 X 100	1.2 - 3.0	TYPE / OV / 12x4 / T / F
300 X 150	1.2 - 3.0	TYPE / OV / 12x6 / T / F
300 X 225	1.2 - 3.0	TYPE / OV / 12x9 / T / F
300 X 300	1.2 - 3.0	TYPE / OV / 12x12 / T / F



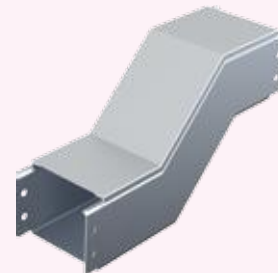
**JET LOCK  
OFFSET  
HORIZONTAL**



**JET LOCK  
OFFSET  
VERTICAL**



**SNAP ON  
OFFSET  
HORIZONTAL**



**SNAP ON  
OFFSET  
VERTICAL**

- ★ Single Compartment Jet lock Offset Horizontal width 100 mm & 100 mm side height **JL / OH / 4x4 / T / F**
- ★ Single Compartment Screw fix Offset Vertical width 75 mm & 75 mm side height **SF / OV / 3x3 / T / F**
- ★ Double Compartment Snap on Offset Vertical width 225 mm & 225 mm side height **SN / OV / 9x9 / T / F**

# SURFACE CABLE TRUNKINGS

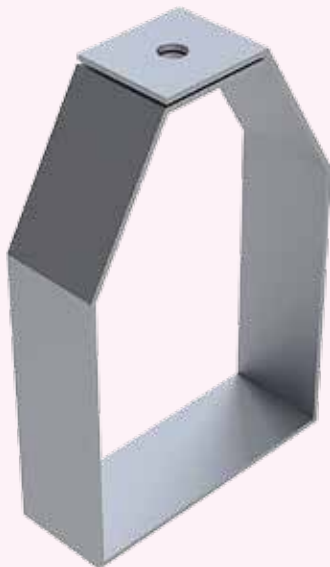
## HANGERS

SIZE mm	THICKNESS ( T ) mm	HANGERS
50 X50	0.8 - 2.0	HT / 2x2 / T / F
75 X 50	0.8 - 2.0	HT / 3x2 / T / F
75 X 75	0.8 - 2.0	HT / 3x3 / T / F
100 X 50	0.8 - 2.0	HT / 4x2 / T / F
100 X 75	0.8 - 2.0	HT / 4x3 / T / F
100 X 100	0.8 - 2.0	HT / 4x4 / T / F
150 X 50	0.8 - 2.0	HT / 6x2 / T / F
150 X 75	0.8 - 2.0	HT / 6x3 / T / F
150 X 100	0.8 - 2.0	HT / 6x4 / T / F
150 X 150	1.2 - 3.0	HT / 6x6 / T / F
225 X 50	1.2 - 3.0	HT / 9x2 / T / F
225 X 75	1.2 - 3.0	HT / 9x3 / T / F
225 X 100	1.2 - 3.0	HT / 9x4 / T / F
225 X 150	1.2 - 3.0	HT / 9x6 / T / F
225 X 225	1.2 - 3.0	HT / 9x9 / T / F
300 X 50	1.2 - 3.0	HT / 12x2 / T / F
300 X 75	1.2 - 3.0	HT / 12x3 / T / F
300 X 100	1.2 - 3.0	HT / 12x4 / T / F
300 X 150	1.2 - 3.0	HT / 12x6 / T / F
300 X 225	1.2 - 3.0	HT / 12x9 / T / F
300 X 300	1.2 - 3.0	HT / 12x12 / T / F

## PLYMOUTH

SIZE mm	THICKNESS ( T ) mm	PLYMOUTH
50 X50	0.8 - 2.0	TYPE / PM / 2x2 / T / F
75 X 50	0.8 - 2.0	TYPE / PM / 3x2 / T / F
75 X 75	0.8 - 2.0	TYPE / PM / 3x3 / T / F
100 X 50	0.8 - 2.0	TYPE / PM / 4x2 / T / F
100 X 75	0.8 - 2.0	TYPE / PM / 4x3 / T / F
100 X 100	0.8 - 2.0	TYPE / PM / 4x4 / T / F
150 X 50	0.8 - 2.0	TYPE / PM / 6x2 / T / F
150 X 75	0.8 - 2.0	TYPE / PM / 6x3 / T / F
150 X 100	0.8 - 2.0	TYPE / PM / 6x4 / T / F
150 X 150	1.2 - 3.0	TYPE / PM / 6x6 / T / F
225 X 50	1.2 - 3.0	TYPE / PM / 9x2 / T / F
225 X 75	1.2 - 3.0	TYPE / PM / 9x3 / T / F
225 X 100	1.2 - 3.0	TYPE / PM / 9x4 / T / F
225 X 150	1.2 - 3.0	TYPE / PM / 9x6 / T / F
225 X 225	1.2 - 3.0	TYPE / PM / 9x9 / T / F
300 X 50	1.2 - 3.0	TYPE / PM / 12x2 / T / F
300 X 75	1.2 - 3.0	TYPE / PM / 12x3 / T / F
300 X 100	1.2 - 3.0	TYPE / PM / 12x4 / T / F
300 X 150	1.2 - 3.0	TYPE / PM / 12x6 / T / F
300 X 225	1.2 - 3.0	TYPE / PM / 12x9 / T / F
300 X 300	1.2 - 3.0	TYPE / PM / 12x12 / T / F

HANGER



JET LOCK PLYMOUTH



SNAP ON PLYMOUTH



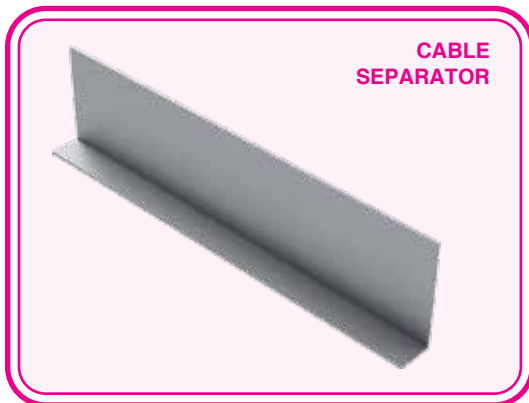
### Reference

- ★ Single Compartment Jet lock Plymuth width 100 mm & 100 mm side height **JL / PM / 4x4 / T / F**
- ★ Single Compartment Screw fix Plymuth width 75 mm & 75 mm side height **SF / PM / 3x3 / T / F**
- ★ Double Compartment Snap on Plymuth width 150 mm & 150mm side height **SN / 2PM / 6x6 / T / F**

# A CABLE MANAGEMENT SYSTEM

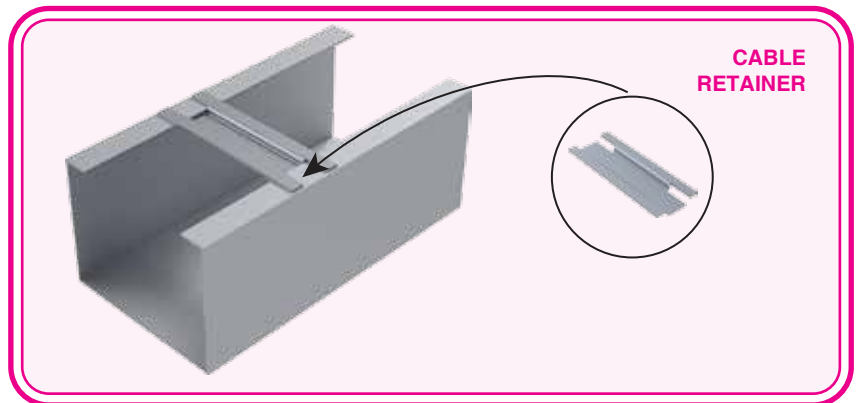
## CABLE SEPARATOR

HEIGHT ( H ) mm	THICKNESS ( T ) mm	CABLE SEPARATOR
50	0.8 - 2.0	CS / H / T / F
75	0.8 - 2.0	CS / H / T / F
100	0.8 - 2.0	CS / H / T / F
150	0.8 - 2.0	CS / H / T / F
200	0.8 - 2.0	CS / H / T / F
225	0.8 - 2.0	CS / H / T / F
300	0.8 - 2.0	CS / H / T / F



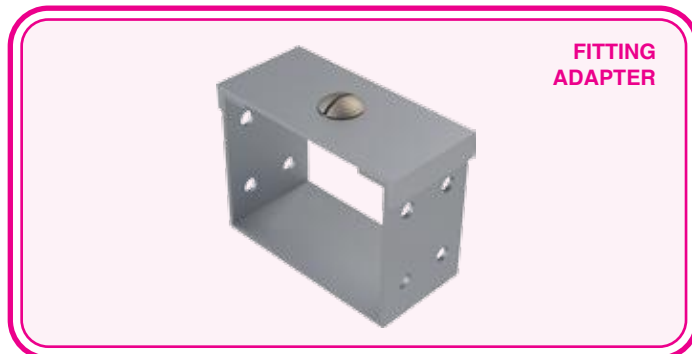
## CABLE RETAINER

HEIGHT ( H ) mm	THICKNESS ( T ) mm	CABLE RETAINER
50	0.8 - 2.0	CR / H / T / F
75	0.8 - 2.0	CR / H / T / F
100	0.8 - 2.0	CR / H / T / F
150	0.8 - 2.0	CR / H / T / F
200	0.8 - 2.0	CR / H / T / F
225	0.8 - 2.0	CR / H / T / F
300	0.8 - 2.0	CR / H / T / F



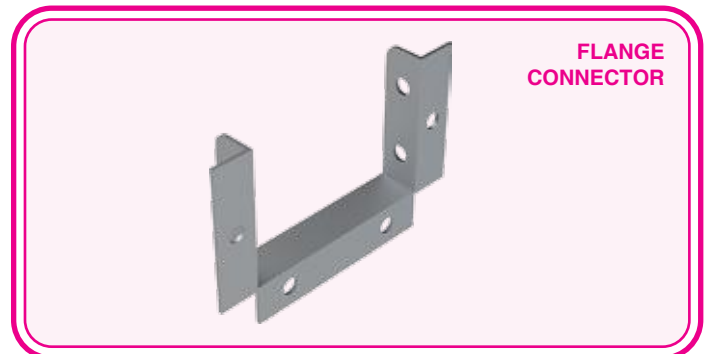
## FITTING ADAPTER

WIDTH mm	THICKNESS ( T ) mm	FITTING ADAPTER
50 x 50	0.8 - 2.0	TYPE / FA / 2x2 / T / F
75 x 75	0.8 - 2.0	TYPE / FA / 3x3 / T / F
100 x 100	0.8 - 2.0	TYPE / FA / 4x4 / T / F
150 x 150	1.2 - 3.0	TYPE / FA / 6x6 / T / F
200 x 200	1.2 - 3.0	TYPE / FA / 8x8 / T / F
225 x 225	1.2 - 3.0	TYPE / FA / 9x9 / T / F
300 x 300	1.2 - 3.0	TYPE / FA / 12x12 / T / F



## FLANGE CONNECTOR

WIDTH mm	THICKNESS ( T ) mm	FLANGE CONNECTOR
50 x 50	0.8 - 2.0	TYPE / FCT / 2x2 / T / F
75 x 75	0.8 - 2.0	TYPE / FCT / 3x3 / T / F
100 x 100	0.8 - 2.0	TYPE / FCT / 4x4 / T / F
150 x 150	1.2 - 3.0	TYPE / FCT / 6x6 / T / F
200 x 200	1.2 - 3.0	TYPE / FCT / 8x8 / T / F
225 x 225	1.2 - 3.0	TYPE / FCT / 9x9 / T / F
300 x 300	1.2 - 3.0	TYPE / FCT / 12x12 / T / F



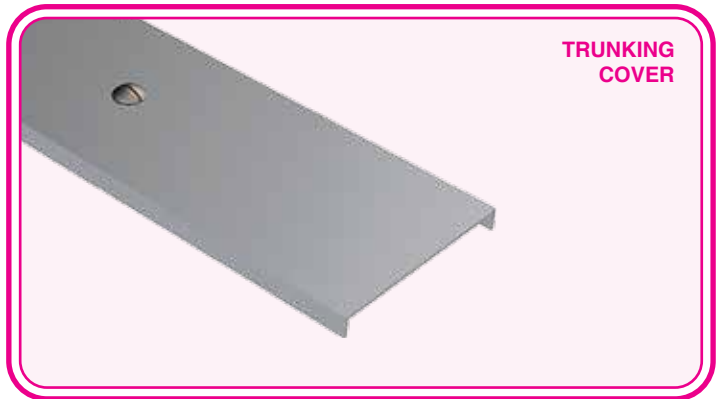
### Reference

- ★ Fitting Adapters with Jet lock can be ordered by specifying the trunking size **JL / FA / WIDTH / T / F**
- ★ Fitting Adapters with Screw fixing can be ordered by specifying the trunking size **SF / FA / WIDTH / T / F**
- ★ Flange Connectors with Jet lock can be ordered by specifying the trunking size **JL / FCT / WIDTH / T / F**

# SURFACE CABLE TRUNKINGS

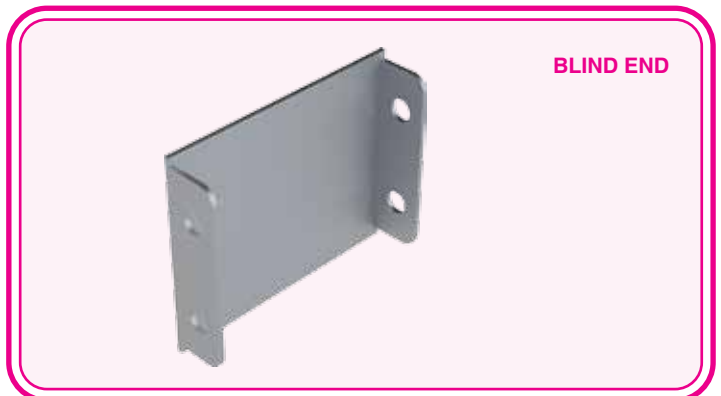
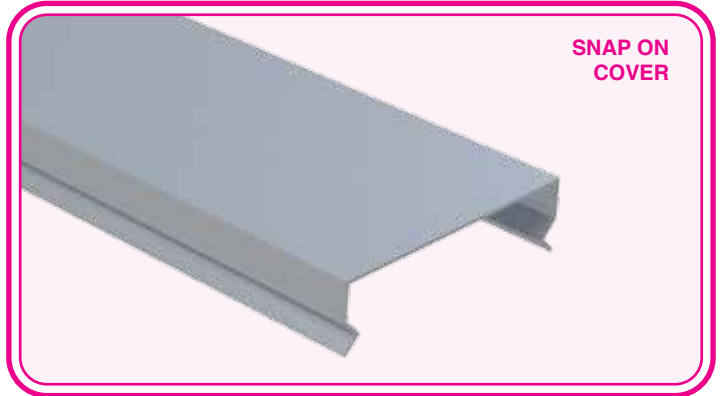
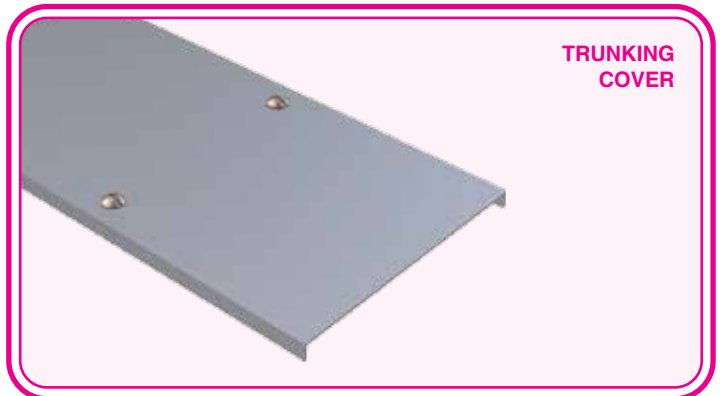
## SPARE TRUNKING COVERS

WIDTH ( W ) mm	THICKNESS ( T ) mm	TRUNKING COVERS
50	0.8 - 2.0	TYPE / C/TC / 2 / T / F
75	0.8 - 2.0	TYPE / C/TC / 3 / T / F
100	0.8 - 2.0	TYPE / C/TC / 4 / T / F
150	1.2 - 3.0	TYPE / C/TC / 6 / T / F
225	1.2 - 3.0	TYPE / C/TC / 9 / T / F
300	1.2 - 3.0	TYPE / C/TC / 12 / T / F



## BLIND END

WIDTH ( W ) mm	THICKNESS ( T ) mm	BLIND END
50 X 50	0.8 - 2.0	TYPE / BET / 2x2 / T / F
75 X 50	0.8 - 2.0	TYPE / BET / 3x2 / T / F
75 X 75	0.8 - 2.0	TYPE / BET / 3x3 / T / F
100 X 50	0.8 - 2.0	TYPE / BET / 4x2 / T / F
100 X 75	0.8 - 2.0	TYPE / BET / 4x3 / T / F
100 X 100	0.8 - 2.0	TYPE / BET / 4x4 / T / F
150 X 50	0.8 - 2.0	TYPE / BET / 6x2 / T / F
150 X 75	0.8 - 2.0	TYPE / BET / 6x3 / T / F
150 X 100	0.8 - 2.0	TYPE / BET / 6x4 / T / F
150 X 150	1.2 - 3.0	TYPE / BET / 6x6 / T / F
225 X 50	1.2 - 3.0	TYPE / BET / 9x2 / T / F
225 X 75	1.2 - 3.0	TYPE / BET / 9x3 / T / F
225 X 100	1.2 - 3.0	TYPE / BET / 9x4 / T / F
225 X 150	1.2 - 3.0	TYPE / BET / 9x6 / T / F
225 X 225	1.2 - 3.0	TYPE / BET / 9x9 / T / F
300 X 50	1.2 - 3.0	TYPE / BET / 12x2 / T / F
300 X 75	1.2 - 3.0	TYPE / BET / 12x3 / T / F
300 X 100	1.2 - 3.0	TYPE / BET / 12x4 / T / F
300 X 150	1.2 - 3.0	TYPE / BET / 12x6 / T / F
300 X 225	1.2 - 3.0	TYPE / BET / 12x9 / T / F
300 X 300	1.2 - 3.0	TYPE / BET / 12x12 / T / F



★ PSI cable trunking covers can be ordered separately in Jet lock, Srew fixing or Snap on arrangement as required

# A CABLE MANAGEMENT SYSTEM

## TRUNKING CAPACITY GUIDE

The following guide will help select the correct size of trunking for the required number and size of cables in the installation, ensuring that an acceptable pulling force is used to install the cables so minimum damage will result. Guide is designed for use with single core PVC insulated cables.

TABLE A		
TYPE OF CONDUCTOR	CONDUCTOR CROSS SECTION mm <sup>2</sup>	CABLE FACTOR
Solid	1.5	8.0
	2.5	11.9
Stranded	1.5	8.6
	2.5	12.6
	4.0	16.6
	6.0	21.2
	10.0	35.3
	16.0	47.8
	25.0	73.9
	35.0	93.3
	50.0	128.7

TABLE B	
CAPACITY UNIT	TRUNKING SIZE mm x mm
738	75 x 25
993	100 x 25
1037	50 x 50
1555	75 x 50
2091	100 x 50
2371	75 x 75
3162	150 x 50
3189	100 x 75
4252	100 x 100
4743	150 x 75
9697	150 x 150

### How to use the guide

- ★ Calculate the Capacity Unit for each cable by multiplying the number of cables by the factor for the cable from Table A.
- ★ Total the Capacity Unit values.
- ★ From Table B select the cable trunking size that is equal to or greater than the total Capacity Unit calculated.

### Reference

NO. CABLES	CONDUCTOR CROSS SECTION mm <sup>2</sup>	CABLE FACTOR (TABLE A)	CAPACITY UNIT (TABLE B)
50	1.5 Stranded	8.6	430
40	2.5 Stranded	12.6	504
20	6.0 Stranded	21.2	424
		<b>TOTAL</b>	<b>1358</b>

The total Capacity Unit is 1358 and therefore relating this value to Table B the trunking size falls between 50mm x 50mm and 75mm x 50mm, therefore the selection should be the greater capacity of 75mm x 50mm.

- ★ For sizes and types of cables not included in the above tables A and B calculate total cross section of cables and select trunking size so that not more than 45% of trunking is filled.

## INSTALLATION GUIDE

**The following Information is given as guidance on the installation of PSI Surface Cable Trunking Systems in accordance with given parameters.**

- ★ Compliance with Wiring Regulations must be observed to ensure that the trunking is not overfilled and unacceptable pressure is applied to the cables, 45% space factor stated in the regulation should not be exceeded i.e. cable trunking shall not be filled greater than 45% of its cross sectional area
- ★ An allowance should be considered for extra cable load to be applied to the cable trunking at a future date and the selection of the size of cable trunking and supports should reflect this.
- ★ Selection of the type and positioning of supports for the cable trunking should be appropriate for the loading requirements of the installation.
- ★ Access to the cable trunking system must be allowed at all times to enable covers to be removed and refitted for the installation of additional cables or for maintenance purposes
- ★ Connection of all components of cable trunking system should be tightened correctly.
- ★ Assembly of components of the cable trunking system use M6 fixings, they should be inserted correctly to avoid damage to the cables and torque tightened to 2.5Nm
- ★ Where there is connection of cable trunking lengths and/or accessories (bends, tees, risers, etc) extra local support should be installed to ensure that there is no significant load applied to the connection as this is not load bearing.
- ★ If the cable trunking requires to be cut or drilled on site all sharp edges and burrs should be removed and zinc rich paint applied to the cut edges to retain the corrosion protection.
- ★ Cable trunking should be securely fixed to all supports using appropriate brackets.
- ★ Cable trunking exposed to wide ambient temperature variations should incorporate expansion connectors in the installation.
- ★ Where there is the possibility of the cables falling out of the cable trunking when the covers are removed due to the orientation of installation, internal cable retainers should be fitted at regular intervals to retain the cables in accordance with current wiring regulations.
- ★ Cables installed in long vertical runs of cable trunking should be supported so they and the conductor terminations are not subjected to undue strain, pin racks should be installed to alleviate this concern.
- ★ Cable trunking should not be used for equipotential bonding.
- ★ Electrical bonding straps are required to be installed at all connections to ensure earth continuity.
- ★ Any dust or debris that has entered the trunking during installation should be removed before laying of the cables and the covers then immediately fitted. All covers should be in place before the circuits are energised.
- ★ Installation of systems should be by a competent person(s) familiar with standard electrical installation practices, electrical equipment and safety of electrical wiring systems.
- ★ When handling, transporting and installing cable trunking systems Health & Safety practices and procedures should be enforced at all times including the use of Personal Protective Equipment (eye protection, gloves, shoes, helmet, etc).



## HANDLING AND STORAGE OF MATERIALS

### Guidelines on the packing, handling and storage of PSI Cable Management and Cable Support Systems when delivered to the project site

- ★ Straight lengths of product supplied bundled and securely strapped with nylon bands.
- ★ Fittings supplied palletised and plastic stretch film wrapped.
- ★ All other accessories supplied sacked or boxed, palletised and plastic stretch film wrapped.
- ★ Care must be taken at all times when off-loading materials so as to avoid damage and also violation of Health & Safety regulations.
- ★ Suitable lifting equipment should be used having sufficient lifting height, reach and weight capability.
- ★ Banding straps / wires securing the bundles must never be used for off-loading of materials.
- ★ Lifting straps and / or chains should wrap fully around the bundle in such a way that they do not put excessive force on the bottom or top outside edges of the materials.
- ★ When cutting the banding straps / wires personal safety protection should be used i.e. gloves, eye glasses, shoes, etc.
- ★ If off-loading by a fork truck, forks should never be inserted in to the ends of the bundles.
- ★ Materials should always be stored under cover in a dry environment.
- ★ Materials should not be placed directly on to the floor, wooden and/or steel battens should to support materials.
- ★ If materials have become wet during off-loading, bundles should be split, items dried and then re-stacked in such a way as to ensure maximum air circulation around and throughout the bundles/stacks.
- ★ If no purpose made on-site storage facility is immediately available temporary storage arrangements needs to be made and every precaution taken to avoid deterioration of the materials. This should include re-stacking the materials as described in #9 and then covering with waterproof sheeting, ensuring that this is not laid directly on to the materials so maximum ventilation is ensured around and throughout the materials.
- ★ Stored materials should be regularly inspected to evaluate their general condition and particularly to identify any signs of water ingress.
- ★ The above guidelines are the minimum recommendations by PSI and failure to comply could result in deterioration of materials on the project site.



**BSI  
KITEMARK**

**BSI KITEMARK CERTIFIED PRODUCTS**  
**1ST CABLE MANAGEMENT MANUFACTURING COMPANY IN**  
**MIDDLE EAST AND AFRICA**



*Engineered to Excellence*

**EDITION 2022**

# QUALITY CERTIFICATIONS

**bsi.**  
Kitemark™ Certificate

This is to certify that: Power Solution Industries LLC  
D 13 D Block  
Phase 3, Dubai Industrial City  
P.O. Box: 113403  
Dubai  
United Arab Emirates

Holds Certificate Number: KM 662960

In respect of:  
**Cable Management, Support and Containment Systems**

This issues the right and licence to use the Kitemark in accordance with the Kitemark Terms and Conditions governing the use of the Kitemark, as may be updated from time to time by BSI Assurance UK Ltd (the "Conditions"). All defined terms in this Certificate shall have the same meaning as in the Conditions.

The use of the Kitemark is authorized in respect of the Product(s) detailed on this Certificate provided at or from the above address.

For and on behalf of BSI: *Chris Lewis* - Certification Director, Product Certification

First Issued: 2018-06-06  
Latest Issue: 2020-12-21

Effective Date: 2020-12-21  
Expiry Date: 2021-06-05

Page: 1 of 6

*..making excellence a habit.*

This certificate has been issued by and remains the property of BSI Assurance UK Ltd, Kitemark Court, Davy Avenue, Knowlton, Milton Keynes MK9 6PQ, United Kingdom and should be returned immediately upon request. To check its validity telephone +44 (0) 191 580 9000. An electronic certificate can be authorised at [www.bsi.com](https://www.bsi.com)

BSI Assurance UK Limited, registered in England under number 7800321 at 289 Chiswick High Road, London W6 4AL, UK. A member of BSI Group of Companies.

**bsi.**  
Kitemark™ Certificate

This is to certify that: Power Solution Industries Ltd  
P.O. Box: 245458  
Obaykan Industrial City  
Industrial Area 2  
Riyadh 11312  
Kingdom of Saudi Arabia

Holds Certificate Number: KM 695333

In respect of:  
**Cable Management, Support and Containment Systems**

This issues the right and licence to use the Kitemark in accordance with the Kitemark Terms and Conditions governing the use of the Kitemark, as may be updated from time to time by BSI Assurance UK Ltd (the "Conditions"). All defined terms in this Certificate shall have the same meaning as in the Conditions.

The use of the Kitemark is authorized in respect of the Product(s) detailed on this Certificate provided at or from the above address.

For and on behalf of BSI: *Chris Lewis* - Certification Director, Product Certification

First Issued: 2018-06-06  
Latest Issue: 2018-06-05

Effective Date: 2018-06-06  
Expiry Date: 2021-06-05

Page: 1 of 6

*..making excellence a habit.*

This certificate has been issued by and remains the property of BSI Assurance UK Ltd, Kitemark Court, Davy Avenue, Knowlton, Milton Keynes MK9 6PQ, United Kingdom and should be returned immediately upon request. To check its validity telephone +44 (0) 191 580 9000. An electronic certificate can be authorised at [www.bsi.com](https://www.bsi.com)

BSI Assurance UK Limited, registered in England under number 7800321 at 289 Chiswick High Road, London W6 4AL, UK. A member of BSI Group of Companies.

**DNV**

**MANAGEMENT SYSTEM CERTIFICATE**

Certificate No: 2194882020-000-000000  
Issue date: 15 November 2020  
Valid until: 15 November 2022

This is to certify that the management system of **Power Solution Industries LLC**, P.O. Box: 113403, D1-05 and D13-D17, D Block, D1 Phase 3, Dubai Industrial City, Dubai, United Arab Emirates

has been found to conform to the Quality Management System standard: **ISO 9001:2015**

This certificate is valid for the following scope: **Manufacture and Supply of Cable Trays, Cable Ladders, Cable Trunking, Cable Support Accessories and Related Cable Management Systems for Engineering Projects, Design, Fabrication and Supply of Solar Panel Mounting Structures, Fabrication and Supply of Structural Steels.**

DNV GL  
DNV GL Assurance  
DNV GL Assurance, P.O. Box 1100, Skjold, 2007, Norway

**DNV**

**MANAGEMENT SYSTEM CERTIFICATE**

Certificate No: 2194882020-000-000000  
Issue date: 15 November 2020  
Valid until: 15 April 2022

This is to certify that the management system of **Power Solution Industries LLC**, P.O. Box: 113403, D1-05 and D13-D17, D Block, D1 Phase 3, Dubai Industrial City, Dubai, United Arab Emirates

has been found to conform to the Environmental Management System standard: **ISO 14001:2015**

This certificate is valid for the following scope: **Manufacture and Supply of Cable Trays, Cable Ladders, Cable Trunking, Cable Support Accessories and Related Cable Management Systems for Engineering Projects, Design, Fabrication and Supply of Solar Panel Mounting Structures, Fabrication and Supply of Structural Steels.**

DNV GL  
DNV GL Assurance  
DNV GL Assurance, P.O. Box 1100, Skjold, 2007, Norway

**DNV**

**MANAGEMENT SYSTEM CERTIFICATE**

Certificate No: 2194882020-000-000000  
Issue date: 15 November 2020  
Valid until: 18 April 2022

This is to certify that the management system of **Power Solution Industries LLC**, P.O. Box: 113403, D1-05 and D13-D17, D Block, D1 Phase 3, Dubai Industrial City, Dubai, United Arab Emirates

has been found to conform to the Occupational Health and Safety Management System standard: **ISO 45001:2018**

This certificate is valid for the following scope: **Manufacture and Supply of Cable Trays, Cable Ladders, Cable Trunking, Cable Support Accessories and Related Cable Management Systems for Engineering Projects, Design, Fabrication and Supply of Solar Panel Mounting Structures, Fabrication and Supply of Structural Steels.**

DNV GL  
DNV GL Assurance  
DNV GL Assurance, P.O. Box 1100, Skjold, 2007, Norway

**DNV-GL**

**MANAGEMENT SYSTEM CERTIFICATE**

Certificate No: 2194882020-000-000000  
Issue date: 27 May 2021  
Valid until: 27 May 2023

This is to certify that the management system of **Power Solution Industries Ltd.**, P.O. Box: 245458, Obaykan Industrial City, Unit No: 05, Building No: 4619, 2nd, Industrial City, New Al-Khary Road, Riyadh 14336, Saudi Arabia,

has been found to conform to the Quality Management System standard: **ISO 9001:2015**

This certificate is valid for the following scope: **Manufacture and supply of Cable Trays, Cable Ladders, Cable Trunking, Cable Support Accessories and related Cable Management Systems for Engineering Projects**

DNV GL  
DNV GL Assurance  
DNV GL Assurance, P.O. Box 1100, Skjold, 2007, Norway

**DNV-GL**

**MANAGEMENT SYSTEM CERTIFICATE**

Certificate No: 2194882020-000-000000  
Issue date: 01 September 2020  
Valid until: 01 September 2022

This is to certify that the management system of **Power Solution Industries Ltd.**, P.O. Box: 245458, Obaykan Industrial City, Unit No: 05, Building No: 4619, 2nd, Industrial City, New Al-Khary Road, Riyadh 14336, Saudi Arabia,

has been found to conform to the Environmental Management System standard: **ISO 14001:2015**

This certificate is valid for the following scope: **Manufacture and supply of Cable Trays, Cable Ladders, Cable Trunking, Cable Support Accessories and related Cable Management Systems for Engineering Projects**

DNV GL  
DNV GL Assurance  
DNV GL Assurance, P.O. Box 1100, Skjold, 2007, Norway

**DNV-GL**

**MANAGEMENT SYSTEM CERTIFICATE**

Certificate No: 2194882020-000-000000  
Issue date: 01 September 2020  
Valid until: 01 August 2022

This is to certify that the management system of **Power Solution Industries Ltd.**, P.O. Box: 245458, Obaykan Industrial City, Unit No: 05, Building No: 4619, 2nd, Industrial City, New Al-Khary Road, Riyadh 14336, Saudi Arabia,

has been found to conform to the Occupational Health and Safety Management System standard: **ISO 45001:2018**

This certificate is valid for the following scope: **Manufacture and supply of Cable Trays, Cable Ladders, Cable Trunking, Cable Support Accessories and related Cable Management Systems for Engineering Projects**

DNV GL  
DNV GL Assurance  
DNV GL Assurance, P.O. Box 1100, Skjold, 2007, Norway

*Quality Policy*

*"Excellence in Engineering"*

*Quality Policy*

*"Excellence in Engineering"*

DESIGN, ENGINEERING & MANUFACTURING COMPANY

UNITED ARAB EMIRATES

P.O. Box: 113403, Dubai

Tel : +971 4 5724787

Fax: +971 4 5724788

sales.ae@powersolutionme.com

KINGDOM OF SAUDI ARABIA

P.O. Box: 245458, Riyadh

Tel : +966 11 2422511

Fax: +966 11 2445080

sales.sa@powersolutionme.com

export@powersolutionme.com

www.powersolutionme.com



*Engineered to Excellence*

**Power Solution Industries**